

Official Ballot

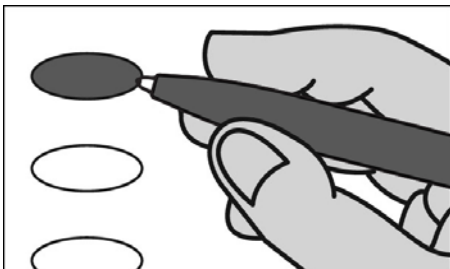
Presidential Preference Vote Nonpartisan Office and Referendum

April 2, 2024

S3

Notice to Voters: If you are voting on Election Day, your ballot must be initialed by two (2) election inspectors. If you are voting absentee, your ballot must be initialed by the municipal clerk or deputy clerk. Your ballot may not be counted without initials (see end of ballot for initials).

General Instructions



If you make a mistake on your ballot or have a question, ask an election inspector for help (absentee voters: Contact your municipal clerk).

To vote for a name on the ballot, fill in the oval next to the name like this: ●

To vote for a name that is not on the ballot, write the name on the line marked "write-in" and fill in the oval next to the name like this: ●

Presidential Preference Vote

In the Presidential Preference Vote:

- You may vote for only ONE candidate.
- You may vote in only ONE party.
- If you choose a party, votes cast in that party will be counted. Votes cast in any other party will not be counted.
- If you do not choose a party, and you vote in more than one party, no votes will be counted.

Special Instructions for Presidential Preference Vote

Choose the party in which you will vote.
Within the party you have chosen, you will have ONE of three choices:

1. Vote for a candidate whose name is printed on this ballot in the party you have chosen.
2. Vote for an uninstructed delegation from Wisconsin to the national convention of the party you have chosen.
3. Write in the name of another person to become the presidential candidate of the party you have chosen.

Fill in ONE oval in ONE party.

Presidential Preference Vote begins at top of next column.

Presidential Preference Vote

Choose a party in which to vote

Fill in the oval next to your party of choice, like this: ● Choose only ONE

- Democratic
 Republican

Democratic Party Primary

If you vote in this party's primary, you may not vote in any other party's primary.

President of the United States Vote for 1

- Joe Biden
 Dean Phillips
 Uninstructed Delegation
 write-in

STOP End Democratic Party Primary

Republican Party Primary

If you vote in this party's primary, you may not vote in any other party's primary.

President of the United States Vote for 1

- Chris Christie
 Vivek Ramaswamy
 Ron DeSantis
 Nikki Haley
 Donald Trump
 Uninstructed Delegation
 write-in

STOP End Republican Party Primary

STOP End Presidential Preference Vote

Nonpartisan offices begin here.

Judicial

Court of Appeals Judge District 4 Vote for 1

- JoAnne Kloppenburg
 write-in

Circuit Court Judge Branch 3 Vote for 1

- Jeffrey S. Kuglitsch
 write-in

Circuit Court Judge Branch 7 Vote for 1

- Barbara W. McCrory
 write-in

Continue voting at top of next column.

County

County Supervisor District 8 Vote for 1

- Marisa Voelkel
 Dave Homan
 write-in

Municipal

Town of Beloit Town Board Supervisor Vote for not more than 2

- Carl McMillan
 Linda Ross
 write-in
 write-in

School District

School District of Beloit Turner School Board Member Vote for not more than 2

- Melissa R. Wittwer
 John R. Turner
 write-in
 write-in

Referendum

To vote in favor of the question, fill in the oval next to "Yes," like this: ●

To vote against the question, fill in the oval next to "No," like this: ●

State

QUESTION 1: "Use of private funds in election administration. Shall section 7 (1) of article III of the constitution be created to provide that private donations and grants may not be applied for, accepted, expended, or used in connection with the conduct of any primary, election, or referendum?"

- Yes
 No

Continue voting on back of ballot.

Referendum

To vote in favor of a question, fill in the oval next to "Yes," like this: ●

To vote against a question, fill in the oval next to "No," like this: ●

State

QUESTION 2: "Election officials. Shall section 7 (2) of article III of the constitution be created to provide that only election officials designated by law may perform tasks in the conduct of primaries, elections, and referendums?"

Yes

No

Official Ballot

**Presidential Preference Vote
Nonpartisan Office and Referendum**

April 2, 2024

for

Town of Beloit

Wards 1 & 13

School District of Beloit
Turner

Ballot issued by

Initials of election inspectors

Absentee ballot issued by

Initials of Municipal Clerk or Deputy Clerk

If issued by SVDs, both must initial.

Certification of Voter Assistance

I certify that I marked or read aloud this ballot at the request and direction of a voter who is authorized under Wis. Stat. §6.82 to receive assistance.

Signature of assistor

For Official Use Only

Inspectors: Identify ballots required to be remade:

Overvoted

Damaged

Other

If this is the **Original Ballot**, write the serial number here:

If this is the **Duplicate Ballot**, write the serial number here:

Initials of inspectors who remade ballot

